

Description: the name of your account

Incoming mail server (POP or IMAP): **mx.w3i.email**

User Name: full email address

Password: password for your email account

Click **Continue** to proceed.

5. Checkmark **Use Secure Sockets Layer (SSL)** option and set

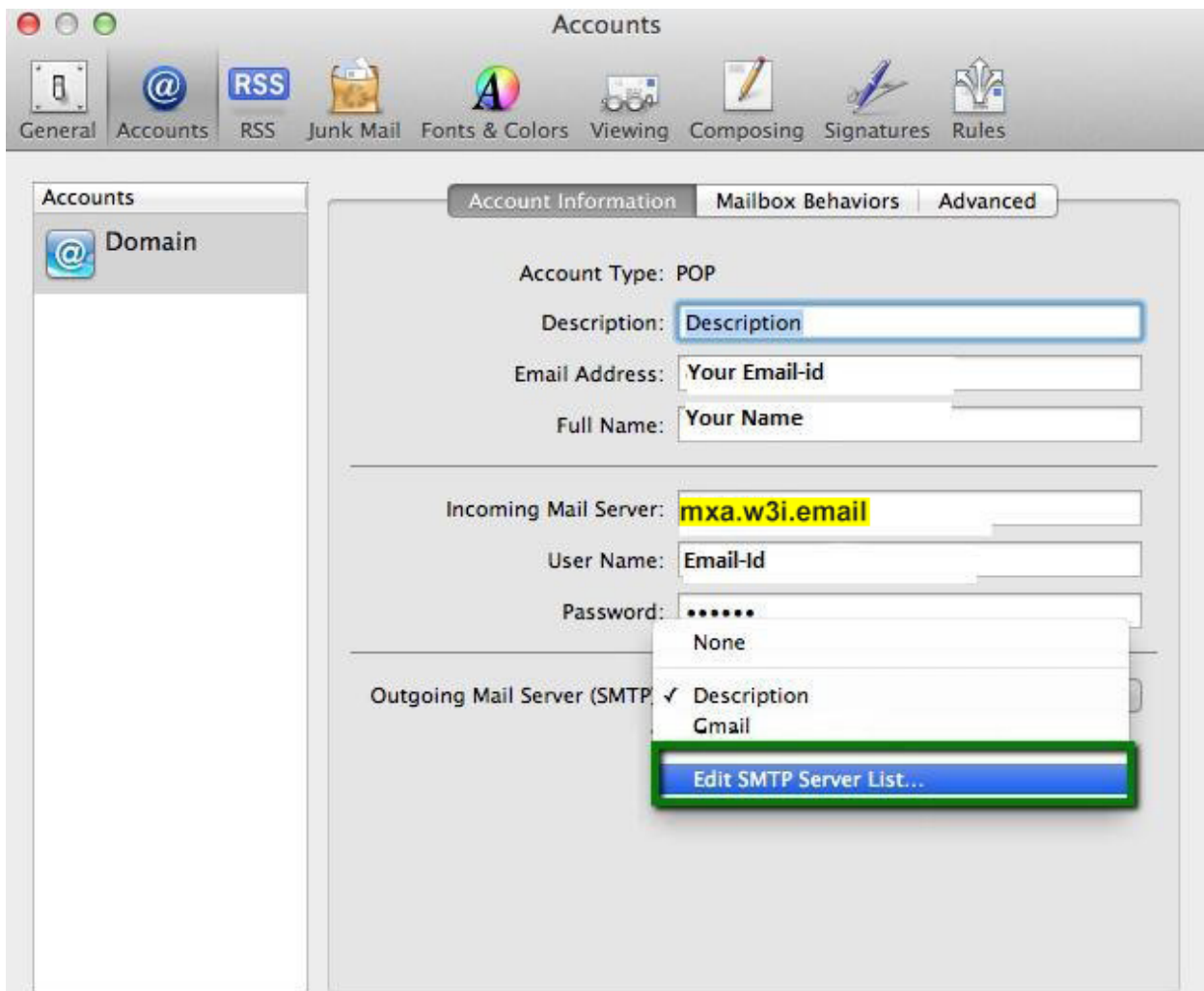
Authentication to **Password:**



8. When you create and send your first email, a message saying **Change prefix to INBOX** appears. Set to **Don't change**.

Once your account has been created, you will be able to choose additional settings for IMAP or POP3 incoming/outgoing server

9. For **outgoing server (SMTP)**, click on your account under **Accounts**. In **Account Information** find **Outgoing Mail Server (SMTP)** field and then select **Edit SMTP server list** option:



10. Here you can set the server and specify the port:

Outgoing server (SMTP): port 465 with SSL

Use Secure Sockets Layer (SSL): should be checked

